



1103 Budapest, Noszlopy u. 16/b.

info@uranusz.hu

www.uranusz.hu

T: +36 1 260 30 30 Fax: +36 1 260 60 83

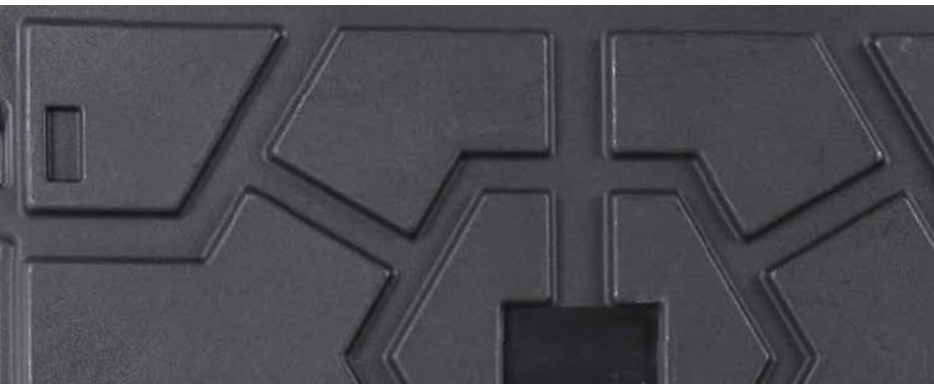
# STRONGMATE



Space for big things

**HEPCO & BECKER**

# STRONGMATE



The new Strongmate product family means: great design and high-quality equipment, combined with a high load capacity. Strongmate guarantees comfort and protection during storage and transportation of heavy and large professional tools and technical equipment. Strong and professional wheels, locks, handles and other components, perfectly integrated, ensure comfort and safety during use. Strongmate boxes are firmly stackable on the surface due to the special structure.



## Layout

According to your wishes, we offer a variety of optional interior accessories such as milled or stamped foams and plastic partitions. Can be combined with many products of the Hepco & Becker series.

# STRONGMATE



## Internal Fixing

Solutions With the variable lashing system (optional), securing points predrilled inside the Strongmate 2001/2002 and 2003 can be used to secure even heavy objects - preventing damage during transport.



## Connecting systems

The stackable boxes can be connected to two or more units using the optional special hook and loop system.



## Corporate Design

Various colors and even color combinations, as well as the possibility to attach customized logos, allow an individualization

# STRONGMATE 2000



**The festival box:  
easy, lots of space and  
splash-proof**



On demand:  
Fixing kit outside consisting  
of 2 lashing straps with 2  
fastening hooks

Very robust and heavy-duty single-walled HDPE stacking transport box. Trolley function for bulky or large-format tools. Lid double-walled. Interior with exterior structure. Boxes provided externally with lashing eyes. High-quality butterfly locks and transport handles. Color: standard black. Other colors available on order. Partition wall system not possible.

**HEPCO & BECKER**

## STRONGMATE 2000



**Integrated handle**  
Cams as adjusting feet and for locking during stacking



**High-quality butterfly locks**  
Possibility for lock attachment



Single-walled HDPE stacking transport box



Cover gasket (self-assembly) attached

### Strongmate 2000 Item-no. 00 2000 8019



ITEM	ITEM-NO
------	---------

Strongmate 2000	00 2000 8019
-----------------	--------------

EQUIPMENT	
Fastening kit outside	on request
Foam inserts	on request

<b>MM</b> Dimensions outside	<b>MM</b> Dimensions inside	<b>KG</b> Weight
1000 x 400 x 470	930 x 340 x 400	13

Material
HDPE

Usable volume
131 litres

Load capacity
up to 30kg

Custom
4202 12 50
Origin: Spain

**HEPCO & BECKER**

# STRONGMATE 2001



Equipment:  
Fastening kit inside, consisting of 2 straps, 4 fastening hooks and screws



On demand:  
Fixing kit outside consisting of 2 lashing straps with 2 fastening hooks

Very robust and heavy-duty double-walled stacking transport box with HDPE. Trolley function for bulky or large-format tools. Lid double-walled. Interior smooth-walled with divider inlets. Boxes outside with fixing eyelets. High-quality butterfly locks and transport handles. Color: standard black. Other colors available on order.

**HEPCO & BECKER**

## STRONGMATE 2001



**Integrated handle**  
High-quality butterfly locks and folding handles



**Stackable**



**On demand:**  
Equipment with partition system  
8 holes for mounting kit inside



**Cover gasket (self-assembly) attached**



**On demand:**  
Equipment with foam

### Strongmate 2001 Item-no. 00 2001 8019



ITEM	ITEM-NO
------	---------

Strongmate 2001	00 2001 8019
-----------------	--------------

#### EQUIPMENT

Fastening kit inside	00 2020 8019
Fastening kit outside	on request
Partition wall system	on request
Foam inserts	on request

<b>MM</b> Dimensions outside	<b>MM</b> Dimensions inside	<b>KG</b> Weight
1000 x 400 x 470	910 x 300 x 370	14,5

Material
HDPE

Usable volume
100 litres

Load capacity
up to 60kg

Custom
4202 12 50
Origin: Spain

**HEPCO & BECKER**

# STRONGMATE 2002



Equipment:  
Fastening kit inside, consisting of 2 straps, 4 fastening hooks and screws



On demand:  
Fixing kit outside consisting of 2 lashing straps with 2 fastening hooks

Very robust and heavy-duty single-walled HDPE stacking transport box. Trolley function for bulky or large-format tools. Lid double-walled. Interior smooth-walled with divider inlets. Boxes outside with fixing eyelets. High-quality butterfly locks and transport handles. Color: standard black. Other colors available on order.

**HEPCO & BECKER**



## STRONGMATE 2002



High-quality folding handles

Integrated rollers



Stackable



High-quality butterfly locks  
Possibility for lock attachment



Cover gasket (self-assembly) attached

On request: Partition system  
40 holes for max. 20 fastening hooks  
(Fastening kit inside)

### Strongmate 2002 Item-no. 00 2002 8019



ITEM	ITEM-NO
------	---------

Strongmate 2002	00 2002 8019
-----------------	--------------

#### EQUIPMENT

Fastening kit inside	00 2020 8019
Fastening kit outside	on request
Partition wall system	on request
Foam inserts	on request

**MM** Dimensions outside  
880 x 590 x 320

**MM** Dimensions inside  
790 x 490 x 220

**KG** Weight  
13,5

Material  
HDPE

Usable volume  
83 litres

Load capacity  
up to 60kg

Custom  
4202 12 50  
Origin: Spain

**HEPCO & BECKER**

# STRONGMATE 2003



Equipment:  
Fastening kit inside, consisting of 2 straps, 4 fastening hooks and screws



On demand:  
Fixing kit outside consisting of 2 lashing straps with 2 fastening hooks

Very robust and heavy-duty single-walled HDPE stacking transport box. Trolley function for bulky or large-format tools. Lid double-walled. Interior smooth-walled with divider inlets. Boxes outside with fixing eyelets. High-quality butterfly locks and transport handles. Color: standard black. Other colors available on order.

**HEPCO & BECKER**

## STRONGMATE 2003



Stackable  
Fastening set as accessory



High quality rubber rollers  
Plastic cams as abrasion protection at stair use



High-quality folding handles



Cover gasket (self-assembly) attached

On request: Partition system  
40 holes for max. 20 fastening hooks  
(Fastening kit inside)

### Strongmate 2003 Item-no. 00 2003 8019



ITEM	ITEM-NO
------	---------

Strongmate 2003	00 2003 8019
-----------------	--------------

EQUIPMENT	
Fastening kit inside	00 2020 8019
Fastening kit outside	on request
Partition wall system	on request
Foam inserts	on request

<b>MM</b> Dimensions outside	<b>MM</b> Dimensions inside	<b>KG</b> Weight
880 x 590 x 445	790 x 490 x 350	15,5

Material
HDPE

Usable volume
131 litres

Load capacity
up to 60kg

Custom
4202 12 50
Origin: Spain

**HEPCO & BECKER**

**HEPCO & BECKER GMBH**  
An der Steinmauer 6  
D-66955 Pirmasens  
Fax: +49 6331 1453 220  
[www.hepco-becker.de](http://www.hepco-becker.de)

**Orders, questions,  
wishes and suggestions:  
Tel: +49 6331 1453 200  
[info@hepco-becker.de](mailto:info@hepco-becker.de)**

We do not assume any liability for printing errors. The technical specifications, scope of delivery, appearance and dimensions correspond to the knowledge available at the time of printing. 10/2018.



---

**HEPCO & BECKER**