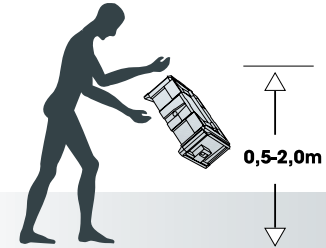
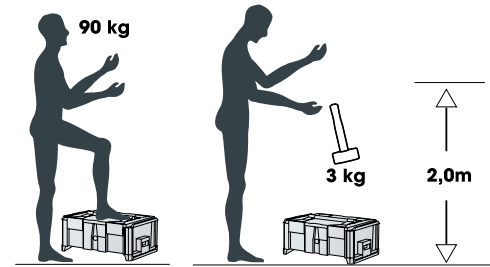


# SKYBOX





The basic idea of the stacking containers is that the individual containers can be connected to each other, in order to ensure easy transport together with the base plate on rollers. The connection of the container arises without any effort in the simple placement on each other. Due to the side snap fasteners, the containers are just as easy to separate again. The containers are offered in 3 sizes and as a complete set. Four different inserts with different sized compartments for tools or small parts or a cube foam filling are available for the assembly.



### Jump test: 90 kg:

no damage to the product

### Ultimate stress test:

3 kg weight H = 2.0 m:

no damage to the product

### Drop test

empty h = 0.5 m to 2.5 m / 5 kg content h = 0.5 m to 1.0 m:

no damage to the product

Drop test 5 kg content h = 1.5 m to 2.0 m:

no damage to the product (closures open)



## The machine case

- Ideal as
- Machine case for power tools
  - Storage box for tools and accessories
  - Splash proof

Matching foam inserts sold separately  
Matching assortment sold separately



## Perfect handling

- Large carrying handle, foldable
- Smooth locks
- Device for padlock
- Stackable and lockable



## The perfect organizer

- Stackable, easily locked or loosened
- Opens on pull or push
- Extreme robust, impact-resistant polypropylene
- Temperature resistant from -33 ° to + 90 ° c
- Tested in PROFI continuous use up to 60 kg

# SKYBOX 1060



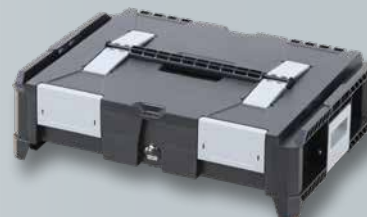
Box including foam insert in the lid



Matching foam inserts made of cube foam and Assortment inserts sold separately

**Skybox 1060**

**Item-no. 00 1060 8019**



**MM** External dimension  
464 x 335 x 142

**MM** Inner dimension  
400 x 300 x 80

**KG** Weight  
2,15

**Usable volume**  
10 Litres

# SKYBOX 1061



Box including foam insert in the lid



Matching foam inserts made of cube foam and Assortment inserts sold separately

**Skybox 1061**

Item-no. **00 1061 8019**



**MM** External dimension  
464 x 335 x 212

**MM** Inner dimension  
400 x 300 x 150

**KG** Weight  
2,7

**Usable volume**  
18 Litres

# SKYBOX 1062



Box including foam insert in the lid



Matching foam inserts made of cube foam and Assortment inserts sold separately

**Skybox 1062**

**Item-no. 00 1062 8019**



**MM** External dimension  
464 x 335 x 362

**MM** Inner dimension  
400 x 300 x 312

**KG** Weight  
3,2

**← →** Usable volume  
37 Litres

# SKYBOX 1070 TOWER-SET



Stable and highly resilient  
- in all life situations

**Skybox 1070**

Item-no. **00 1070 8019**

Scope of delivery:

- 1x Skybox S
- 1x Skybox M
- 1x Skybox XL
- 1x Plattform

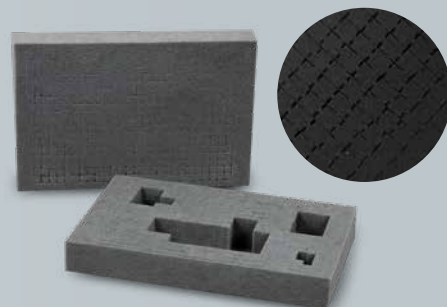




## PU cube foam insert

Item-no. **53 6206 1919**

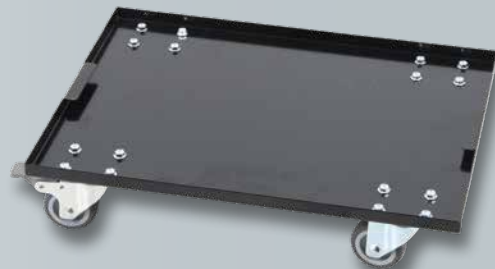
Easy release of the  
Foam pads and thus  
perfect fixing of  
sensitive parts such as e.g.  
Laptop / Mobile / instruments.  
460 x 50 x 310 mm



## Sheet steel platform

Item-no. **00 1065 8019**

4 wheels, 2 of them steerable and with parking brake  
464 x 335 mm  
Weight: 3,2 kg





**Assortment use 5**

Item-no. **00 1066 8019**

5 subjects  
 1 subject 180 x 180 mm  
 2 subjects 85 x 85 mm  
 1 subject 180 x 85 mm  
 1 subject 365 x 85 mm  
 Weight: 200 g



**Assortment use 10**

Item-no. **00 1067 8019**

10 subjects  
 1 subject 275 x 85 mm  
 9 subjects 85 x 85 mm  
 Weight: 220 g



**Assortment use 18**

Item-no. **00 1068 8019**

18 subjects 55 x 85 mm  
 Weight: 220 g



**Assortment use uni**

Item-no. **00 1069 8019**

3 - 12 subjects  
 3 compartments 365 x 85 mm  
 with bars for variable  
 Classification up to 12 subjects  
 possible  
 Weight: 320 g



**HEPCO & BECKER GMBH**  
An der Steinmauer 6  
D-66955 Pirmasens  
Fax: 06331 1453 220  
[www.hepco-becker.de](http://www.hepco-becker.de)

**Orders, questions,  
wishes and suggestions:  
Tel: +49 6331 1453 200  
[info@hepco-becker.de](mailto:info@hepco-becker.de)**

Subject to technical development and modifications. Delivery without tools.  
We do not assume any liability for printing errors. The technical specifications, scope of delivery, appearance and dimensions correspond to the knowledge available at the time of printing. 05/2019.

